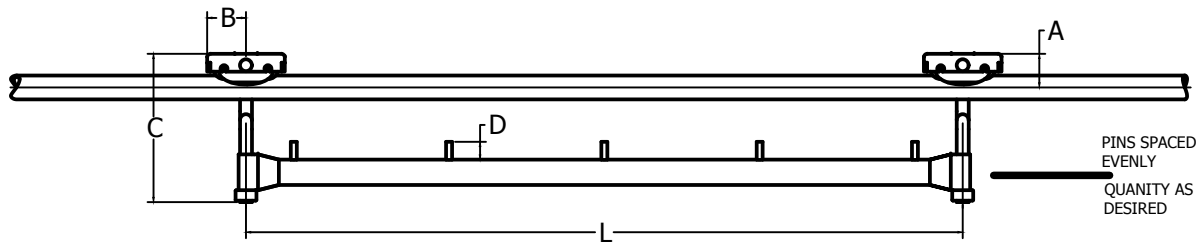



TABLE							Load Cap.	Weight EoD
PART No.	A	B	C	D	L			
1518-0	1 3/16"	1 11/16"	8 3/16"	3/4"	30"	200 lbs.	4 1/2 lbs.	
1517-0	1 3/16"	1 11/16"	8 3/16"	3/4"	36"	200 lbs.	4 1/2 lbs.	
1518-1	1 3/16"	1 11/16"	8 3/16"	3/4"	42"	200 lbs.	4 3/4 lbs.	



PINS SPACED
EVENLY
QUANTITY AS
DESIRED

NOTES:
1. REMOVE ALL BURRS, SHARP EDGES AND CORNERS.

WHITE CONVEYORS, INC. 10000 W. 100th St. Overland Park, MO 66204 (816) 875-1100 FAX (816) 875-1101 WWW.WHITECONVEYORS.COM	DATE: 05/20/10 DRAWN BY: JRM CHECKED BY: JRM APPROVED BY: JRM	DATE: 05/20/10 DRAWN BY: JRM CHECKED BY: JRM APPROVED BY: JRM	 THIS PRINT THE PROPERTY OF WHITE CONVEYORS, INC. DO NOT REPRODUCE, DISSEMINATE OR DESTROY	TITLE: SPEED RAIL TROLLEY ASSEMBLY PART NO.: 1518-0 REV: 001 SCALE: 1" = 1"
	THE INFORMATION CONTAINED HEREIN IS THE PROPERTY OF WHITE CONVEYORS, INC. AND IS UNCLASSIFIED. ALL RIGHTS ARE RESERVED.			